

# Boston Children's at Waltham

9 Hope Avenue, Waltham, MA 02453 | 781-216-2100  
[bostonchildrens.org/waltham](http://bostonchildrens.org/waltham)



**Boston Children's Hospital**

**Community of Care**

Until every child is well™

## Services at Boston Children's at Waltham

- Acupuncture
- Adolescent Medicine
- Adolescent Substance Abuse
- Allergy/Immunology
- Ambulatory Surgery
- Audiology (diagnostic and habilitative)
- Augmentative Communication
- Boston Adult Congenital Heart (BACH)
- Cardiology
- Center for Communication Enhancement
- Contact Lens Service
- Deaf and Hard of Hearing
- Dermatology
- Developmental Medicine
- Diabetes
- Endocrinology
- Gastroenterology
- General Surgery
- Genetics
- Headache Clinic
- Hematology
- Infusion
- Lactose Breath Testing
- Nephrology
- Neurology
- Neurosurgery
- Nutrition Services
- Occupational Therapy
- Ophthalmology
- Optimal Weight for Life Program
- Oral and Maxillofacial Surgery
- Orthopedic Surgery
- Otolaryngology
- Pain Rehabilitation Center
- Pediatric Eyewear (Medford Optical)
- Phlebotomy
- Physical Therapy
- Plastic Surgery
- Preventive Cardiology
- Pulmonary/Respiratory Diseases
- Radiology
  - CT
  - Diagnostic
  - Fluoroscopy
  - MRI
  - Nuclear Medicine
  - Ultrasound
- Rheumatology
- Sleep Disorders
- Sleep Lab
- Speech Pathology
- Sports Medicine
- Stress Testing
- Urodynamics
- Urology



## Driving directions

### From the south (Route 128)

- Take Exit 24 for Route 30.
- Route 30 is one of several options at this exit, so follow signs carefully.
- Turn left at the top of the ramp onto Route 30 West.
- Turn right at the traffic light onto River Road which becomes South Street.
- Go past Brandeis University, which is two miles ahead.
- Continue about ¼ mile and take a right on Longview Avenue.
- Follow signs, bearing left around parking garage, to entrance for Boston Children's Hospital Waltham.



### From the north (Route 128)

- Take Exit 24 for Route 30.
- At end of ramp, proceed through traffic light (across Route 30).
- This is River Road which becomes South Street.
- Go past Brandeis University, which is two miles ahead.
- Continue about ¼ mile and take a right on Longview Avenue.
- Follow signs, bearing left around parking garage, to entrance for Boston Children's Hospital Waltham.

## Please arrive to your appointment on time

We really appreciate your timely arrival. Traffic in our area can be challenging, especially during rush hour. Please allow ample time to arrive.

## No-show policy

Our goal is to schedule appointments as close as possible to the dates and times desired by our patients. If you are unable to keep an appointment, please notify us at least 24 hours in advance so that another patient may take your place.

## Request an appointment online

Visit our web site to request an appointment in many departments and programs. The request will go to a representative who will be in touch with you within two business days. Please leave a window of time when it might be best to call you back. To access the "Request an Appointment" feature, visit [childrenshospital.org/appointment](http://childrenshospital.org/appointment).

Visiting Boston Children's? **There's a {M}APP for that**

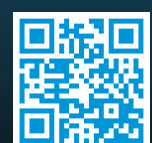
Learn more [childrenshospital.org/myway](http://childrenshospital.org/myway)

**FREE DOWNLOAD**  
Scan with your smartphone

iPhone



Droid





## Medical Provider List

### Acupuncture

781-216-3700

### Adolescent Medicine

781-216-1800

### Adolescent Substance Abuse

781-216-1800

### Allergy/Immunology

781-216-1800

### Ambulatory Surgery

781-216-1200

### Audiology (diagnostic and habilitative)

617-355-6461

### Augmentative Communication

781-216-2209

### Boston Adult Congenital Heart (BACH)

617-355-2079

### Cardiology

617-355-2079

### Center for Communication Enhancement

781-216-2200

### Contact Lens Service

781-216-1444

### Deaf and Hard of Hearing

781-216-2215

### Dermatology

781-216-1800

### Developmental Medicine

781-216-1800

### Diabetes

781-216-1800

### Endocrinology

781-216-1800

### Gastroenterology

781-216-1800

### General Surgery

617-355-7800

### Genetics

781-216-1800

### Headache Clinic

781-216-1960

### Hematology

781-216-1800

### Infusion

781-216-1500

### Lactose Breath Testing

781-216-1800

### Nephrology

781-216-1800

### Neurology

781-216-2596

### Neurosurgery

617-355-6008

### Nutrition Services

781-216-1800

### Occupational Therapy

781-216-3670

### Ophthalmology

781-216-1400

### Optimal Weight for Life Program

781-216-1800

### Oral and Maxillofacial Surgery

781-216-1644

### Orthopedic Surgery

617-355-6021

### Otolaryngology

617-355-3462

### Pain Rehabilitation Center

781-216-1650

### Pediatric Eyewear (Medford Optical)

781-216-1444

### Phlebotomy

781-216-1980

### Physical Therapy

781-216-3670

### Plastic Surgery

781-216-1600

### Preventive Cardiology

617-355-2079

### Pulmonary/Respiratory Diseases

781-216-1800

### Radiology

781-216-1100

- CT
- Diagnostic
- Fluoroscopy
- MRI
- Nuclear Medicine
- Ultrasound

### Rheumatology

781-216-1800

### Sleep Disorders

781-216-2596

### Sleep Lab

781-216-2570

### Speech Pathology

781-216-2237

### Sports Medicine

617-355-3501

### Stress Testing

617-355-2079

### Urodynamics

617-355-7796

### Urology

617-355-7796

For our most up-to-date listing of medical  
providers please visit:

[bostonchildrens.org/specialists](https://bostonchildrens.org/specialists)

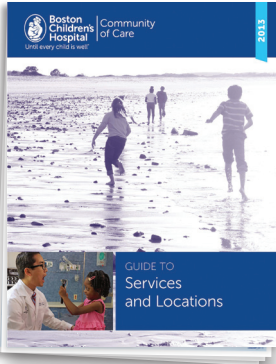


**Boston Children's Hospital**  
Until every child is well™

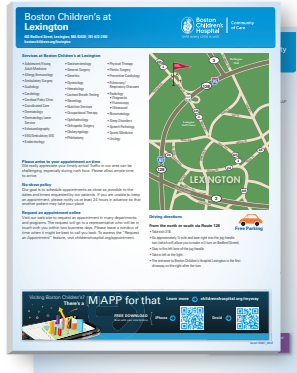
**Community of Care**

**Free materials for healthcare providers**

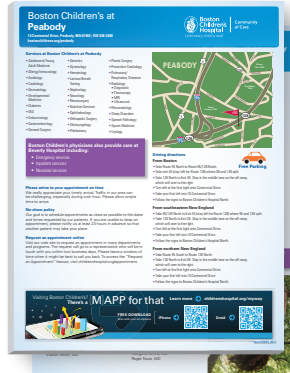
**Services & Location Guide**  
Item #152142



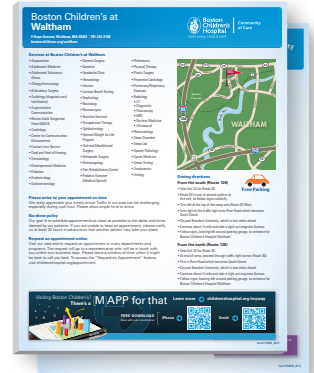
**Boston Children's at Lexington**  
50-sheet map pad, 2 sides  
Item #153012



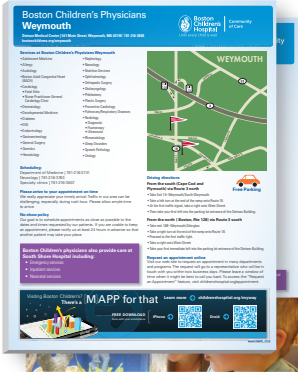
**Boston Children's at Peabody**  
50-sheet map pad, 2 sides  
Item #153010



**Boston Children's at Waltham**  
50-sheet map pad, 2 sides  
Item #153013



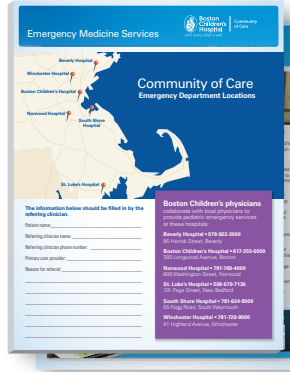
**Boston Children's Physicians Weymouth**  
50-sheet map pad, 2 sides  
Item #153011



**Boston Children's Hospital**  
50-sheet map pad  
Item #153009

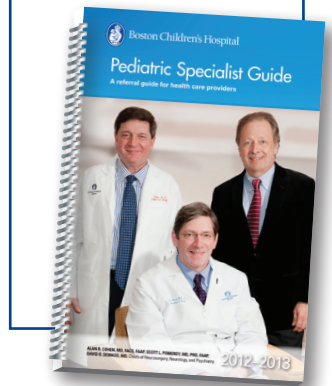


**Emergency Medicine Services**  
50-sheet map pad, 2 sides  
Item #153143



**Also available**

**Pediatric Specialist Guide**  
Item #150179-12



You can order these materials by visiting [bostonchildrens.org/foryourpractice](http://bostonchildrens.org/foryourpractice)

