



**Boston
Children's
Hospital**

Until every child is well™

Community
of Care

2013



GUIDE TO Services and Locations

Table of Contents

Boston Children's Hospital Community of Care Overview	page 1
Programs and Services Phone Directory	page 2
Urgent Appointment Triage	page 3
Ambulatory, Hospital and Ancillary Services by Location	pages 4-5
Emergency Medicine Services	pages 6-7
Boston Children's at Lexington	pages 8-9
Boston Children's at Peabody	pages 10-11
Boston Children's at Waltham	pages 12-13
Boston Children's Physician's Weymouth	pages 14-15
Boston Children's Main Campus	page 16
Ordering Information	back cover



**Boston
Children's
Hospital**

**Community
of Care**

Until every child is well™

In addition to our **Boston Children's Hospital Longwood** location, our **Community of Care** includes **Boston Children's** satellite locations, **Boston Children's Physician** office locations and **Community of Care** hospital members.

Boston Children's Satellites

Boston Children's at Peabody

10 Centennial Drive, Peabody, MA 01960 | 978-538-3600

Boston Children's at Lexington

482 Bedford Street, Lexington, MA 02420 | 781-672-2100

Boston Children's at Waltham

9 Hope Avenue, Waltham, MA 02453 | 781-216-2100

Boston Children's Physician Office Locations

Boston Children's Physicians Weymouth

Stetson Medical Center, 541 Main Street
Weymouth, MA 02190 | 781-216-3800

Boston Children's Community of Care Hospital Members

Beverly Hospital

85 Herrick Street, Beverly, MA 01915 978-922-3000

Children's Hospital at Dartmouth in clinical affiliation with Boston Children's Hospital

Children's Hospital at Dartmouth

100 Hitchcock Way, Manchester, NH 03104 603-695-2500

Good Samaritan Medical Center

235 North Pearl Street, Brockton, MA 02301 508-427-3000

Holy Family Hospital

70 East Street, Methuen, MA 01844 978-687-0156

Norwood Hospital

800 Washington Street, Norwood, MA 02062 781-769-4000

St. Elizabeth's Medical Center

736 Cambridge Street, Boston, MA 02135 617-789-3000

Southcoast Hospitals Group

St. Luke's Hospital

101 Page Street, New Bedford, MA 02740 508-997-1515

South Shore Hospital

55 Fogg Road, South Weymouth, MA 02190 781-624-8000

Winchester Hospital

41 Highland Avenue, Winchester, MA 01890 781-729-9000



Boston Children's physicians also provide specialty care in:

Andover	Framingham	Norwood
Bedford, NH	Lawrence	Sandwich
Brockton	Nashua, NH	Stoneham
Exeter, NH	New Bedford	Wilmington
Fall River	Newton	

Program and Services Phone Directory



Boston Children's Hospital | **Community of Care**
Until every child is well™

Main Number

617-355-6000 | TTY 617-730-0152

Emergency Department

617-355-6611 | TTY 617-355-6611

Expect Line 617-355-2170

Critical Care Transport

866-771-KIDS

Assistive Technology (V/TTY)

800-848-8867

Regional Center for Poison Control and Prevention

800-222-1222

TTY 888-244-5313

Primary Care Programs

Adolescent Medicine617-355-7181

Primary Care Center617-355-7701

Specialty Programs

Adolescent Medicine617-355-7181

Audiology, diagnostic617-355-6461

Allergy/Asthma617-355-6117

Cardiology617-355-2079

Center for Communication
Enhancement.....781-216-2200

Child Protection Program
Abuse/neglect.....617-355-7979

Clinical Nutrition617-355-6177

Complex Care Service.....617-355-6162

Deaf & Hard of Hearing Program781-216-2215
TTY/Hearing Impaired.....781-216-3687

Dentistry.....617-355-6571

Dermatology617-355-6117

Dermatology Laser.....617-355-6117

Developmental Medicine Center.....617-355-6501

Emergency Services.....617-355-6611
Expect Line.....617-355-2170

Endocrinology/Diabetes617-355-7476

Environmental Health Center (Lead) ..617-355-8177

Epilepsy.....617-355-7970

Gastroenterology/Nutrition617-355-6058

General Surgery617-355-7800

Genetics.....857-218-4637

Growth and Nutrition617-355-7713

Gynecology617-355-7648

Hematology.....617-355-8246

Immunology617-355-6117

Infectious Diseases617-355-6832

Metabolism617-355-6394

Nephrology617-355-6129

Neurology.....617-355-6388

Neurosurgery617-355-6008

Newborn Medicine617-355-6027

Occupational Therapy.....617-355-6588

Oncology.....888-733-4662

Ophthalmology617-355-6401

Oral Surgery.....617-355-2796

Orthopedics617-355-6021

Otolaryngology (V/TTY)617-355-6462

Pain & Incontinence617-355-2092

Physical Therapy617-355-7212

Plastic Surgery.....617-355-7252

Psychiatry, Outpatient.....617-355-6688

Pulmonary/Respiratory Diseases.....617-355-1900

Radiation Oncology.....617-355-8399

Radiology.....617-355-6286

Renal Transplant/Dialysis.....617-355-7636

Rheumatology617-355-6117

Sleep Disorders781-216-2570

Sports Medicine617-355-3501

Urology.....617-355-7796

Patient Services

Admitting617-355-6644

Billing, General617-355-7114

Blood Donor Center617-355-6677

Center for Families617-355-6279

Child Life Services.....617-355-6551

Critical Care Transport866-771-KIDS

Hospitalists.....617-355-7584

International Center.....617-355-5209

Interpreter Services.....617-355-7198

Medical Records617-355-7546

Regional Center for Poison Control & Prevention
Emergency Line800-222-1222

Business Line617-355-6607

TTY/Hearing Impaired.....888-244-5313

Page Operator617-355-6369

Pastoral Care (Chaplaincy)617-355-6664

Patient Access Center617-355-6387

Patient Relations.....617-355-7673

Patient/Visitor Information617-355-6201
TTY/Hearing Impaired.....617-355-3443

Pharmacy (CVS).....617-975-3500

Social Work.....617-355-7965

Administrative Services

Marketing and Communications617-919-3110

Pediatric Physicians' Organization
at Children's.....617-919-4074

Physician Relations/Outreach.....617-919-3002

President's Office617-355-8555



Urgent Appointment Triage



Boston Children's Hospital | **Community of Care**

Until every child is well™

Please use this directory to make arrangements for patients who require urgent appointments with **Boston Children's** specialists.

Adolescent Medicine617-355-7181 (Option #1)
Outpatient Eating Disorders 617-355-7178

Adolescent Substance Abuse.....617-355-2727
This is not an emergency service. Emergency cases should be seen in the ED or a detox program.

Allergy/Asthma617-355-6117 (Option #2)

Audiology.....617-355-6461
To discuss the urgency of the case with a coordinator..... 617-355-5697

Cardiology617-355-2079 (Option #3)

Dentistry 617-355-6571

Dermatology 617-355-6117

Developmental Medicine Center.....617-355-6501

Diabetes.....617-355-6369
Endocrinologist on-call.

Emergency Services.....617-355-2170
Expect Line

Endocrinology..... 617-355-7476
To fax patient's medical history..... 617-730-0194

Environmental Health Center.....617-355-8177

Epilepsy.....617-355-2413
Monday through Friday, 8 a.m. to 4:30 p.m.
To fax patient's medical history..... 617-730-0463

Gastroenterology and Nutrition617-355-6058
Ask for Rapid Response, 8 a.m. to 4:30 p.m.
Urgent patients are seen within 24 hours.
Same day when necessary.

General Surgery.....617-355-7800 (Option #2)
Patients will usually be seen in our office if they arrive prior to 4 p.m. After 4 p.m. they may be asked to go to the Emergency Department.

Genetics.....857-218-4637

Gynecology617-355-7648 (Option #1)
Monday through Friday, 9 a.m. to 4:30 p.m.

Hematology.....617-355-8246
To fax relevant data..... 617-730-0641

Immunology617-355-6117 (Option #2)

Infant Follow-Up617-355-6622

Infectious Disease617-355-6832

Metabolism617-355-2521

Nephrology617-355-6129

Neurology.....617-355-8348

Neurophysiology617-355-2842

Neurosurgery617-355-6009

Ophthalmology617-355-6401 (Option #1)

Optimal Weight for Life.....617-355-5159

Oral surgery617-355-2796

Orthopedics617-355-6021
(Option #3) + (Option #1)

Otolaryngology.....617-355-7147
To page the ORL nurse.

Pain Center.....617-355-6995

Physical Therapy.....617-355-7212

Plastic & Oral Surgery.....617-355-7252 (Option #3)
Waltham location..... 781-216-1600

Poison Control Center 1-888-244-5314

Psychiatry.....617-355-6369
Psychiatric clinician on-call.

Pulmonary/Respiratory Diseases.....617-355-1900
(Option #2)

Rheumatology617-355-6369
Rheumatologist on-call.

Sports Medicine617-355-3501 (Option #2)

Urology.....617-355-7796 (Option #1)
Patients will usually be seen in our office if they arrive prior to 5 p.m. After 5 p.m. they may be asked to go to the Emergency Department.

Expect Line: 617-355-2170

Call the Expect Line to let the Boston Children's Emergency Department know when your patient will arrive.

Page Operator: 617-355-6369

Call the Boston Children's Page Operator to speak with a specialist-on-call or to reach specialist coverage after hours.



Services by Location



Boston Children's Hospital

Community of Care

Until every child is well™

Boston Children's physicians provide care at these locations:

Ambulatory Services

Boston
Boston Children's Main Campus

Brockton
Good Samaritan Medical Center/Oak Street

Lexington
Boston Children's at Lexington

Manchester, NH
Children's Hospital at Dartmouth

Norwood
Norwood Hospital/Drapeer Building

Peabody
Boston Children's at Peabody

Waltham
Boston Children's at Waltham

Weymouth
Boston Children's Physicians Weymouth

	Boston	Brockton	Lexington	Manchester, NH	Norwood	Peabody	Waltham	Weymouth
Acupuncture	•						•	
Adolescent Medicine	•		•			•	•	•
Adolescent Substance Abuse Program	•						•	
Allergy/Immunology	•		•			•	•	•
Boston Adult Congenital Heart	•						•	•
Cardiology	•	•	•	•	•	•	•	•
Cerebral Palsy Clinic	•		•					
Coordinated Care	•	•	•					
Dermatology	•		•			•	•	•
Developmental Medicine	•					•	•	•
Diabetes	•					•	•	•
Endocrinology	•		•		•	•	•	•
Gastroenterology	•	•	•	•	•	•	•	•
General Surgery	•	•	•			•	•	•
Genetics	•		•		•	•	•	•
Gynecology	•		•			•		
Headache Clinic	•					•		
Hematology	•		•			•	•	•
Nephrology	•					•	•	•
Neurology	•	•	•			•	•	•
Neurosurgery	•					•	•	
Ophthalmology	•		•			•	•	•
Optimal Weight for Life Program	•					•	•	
Oral/Maxillofacial Surgery	•						•	
Orthopedic Surgery	•	•	•			•	•	•
Otolaryngology	•		•			•	•	•
Plastic Surgery	•		•			•	•	•
Preventive Cardiology	•		•			•	•	•
Psychiatry	•							
Pulmonary/Respiratory Diseases	•		•		•	•	•	•
Rheumatology	•		•			•	•	•
Sleep Disorders	•		•			•	•	•
Sports Medicine	•		•			•	•	•
Urology	•	•	•		•	•	•	•

Boston Children's Community of Care Hospital Services

Beverly
Beverly Hospital

Boston
St. Elizabeth's Medical Center

Brockton
Good Samaritan Medical Center

Methuen
Holy Family Hospital

New Bedford
St. Luke's Hospital

Norwood
Norwood Hospital

South Weymouth
South Shore Hospital

Winchester
Winchester Hospital

	Beverly	Boston	Brockton	Methuen	New Bedford	Norwood	South Weymouth	Winchester
Emergency services	•				•	•	•	•
Inpatient services	•				•	•	•	•
Neonatal services	•	•	•	•		•	•	•

Services by Location



Boston Children's Hospital

Community of Care

Until every child is well™

Ancillary services are available at these locations:

Ancillary Services

Boston
Boston Children's
Main Campus

Lexington
Boston Children's
at Lexington

Peabody
Boston Children's
at Peabody

Waltham
Boston Children's Hospital
at Waltham

Weymouth
Boston Children's Physicians
Weymouth

Ancillary Services	Boston Boston Children's Main Campus	Lexington Boston Children's at Lexington	Peabody Boston Children's at Peabody	Waltham Boston Children's Hospital at Waltham	Weymouth Boston Children's Physicians Weymouth
Ambulatory Surgery	•	•		•	
Audiology	•	•	•	•	•
Augmentative Communication				•	
Center for Communication Enhancement				•	
Contact Lens Service	•			•	
Deaf and Hard of Hearing				•	
Dermatology Laser Service	•	•			
Echocardiography (ECHO)	•	•	•	•	•
EEG	•	•	•		•
Infusion	•			•	
Lactose Breath Testing		•	•	•	
Nutrition Services	•	•	•	•	•
Occupational Therapy	•	•		•	
Pain Rehabilitation Center				•	
Pediatric Eyewear				•	
Phlebotomy	•	•	•	•	•
Physical Therapy	•	•		•	
Radiology	•	•	•	•	•
CT	•			•	
Diagnostic	•	•	•	•	•
Fluoroscopy	•	•	•	•	•
MRI	•		•	•	
Nuclear Medicine	•			•	
Ultrasound	•	•	•	•	•
Sleep Lab	•			•	
Speech Pathology	•	•	•	•	•
Stress Testing	•			•	
Urodynamics	•			•	



Community of Care Emergency Department Locations

The information below should be filled in by the referring clinician.

Patient name: _____

Referring clinician name: _____

Referring clinician phone number: _____

Primary care provider: _____

Reason for referral: _____

Boston Children's physicians

collaborate with local physicians to provide pediatric emergency services at these hospitals:

Beverly Hospital • 978-922-3000

85 Herrick Street, Beverly

Boston Children's Hospital • 617-355-6000

300 Longwood Avenue, Boston

Norwood Hospital • 781-769-4000

800 Washington Street, Norwood

St. Luke's Hospital • 508-679-7136

101 Page Street, New Bedford

South Shore Hospital • 781-624-8000

55 Fogg Road, South Weymouth

Winchester Hospital • 781-729-9000

41 Highland Avenue, Winchester

To order a map pad of these pages see back cover

Emergency Medicine Services



**Boston
Children's
Hospital**

**Community
of Care**

Until every child is well™

Unless the accident or illness is life threatening, it's best to talk to your child's doctor before going to the hospital emergency department, because your doctor will be able to tell you if you should come into the office or go directly to the appropriate hospital emergency department.

If your child needs emergency medical attention, please go immediately to your nearest emergency department. If you can't safely transport your child to the hospital, call 911 without delay.

The information below may give you a better idea of what to expect.

What to bring

- Insurance information
- Any X-rays that have been taken
- Snacks, toys and books; please check with a member of our staff to determine if it is safe for you/your child to eat or drink based on the reason for your visit
- List of your/your child's medications

A trip to a hospital emergency department is typically comprised of four steps.

Step 1: Triage A triage nurse will see you/your child within minutes of your arrival. He or she will ask some questions, take vital signs (temperature, pulse), weigh you/your child and perform a brief exam. You may notice patients being taken out of order. This is because some illnesses or injuries require immediate attention.

An administrator will ask for your home address, the name of your/your child's primary care doctor and other relevant information that is important for staff to be able to identify you/your child properly. If the emergency exam rooms are filled, you will be asked to wait in the reception area.



Step 2: Reception area Emergency department staff work hard to make your time in the reception area as short as possible. If there is a change in your/your child's condition, or if your child needs a scheduled medication while waiting, please contact the triage nurse immediately.

As soon as an exam room is available, you will be called into the treatment area. If, for any reason, you decide to leave prior to being discharged, please inform emergency department staff.

Step 3: Treatment area/exam room Once you/your child is brought into the treatment area, you will meet the emergency medicine nurse and the emergency medicine staff doctor who will care for you/your child while in the emergency department. If you are in the Boston Children's Hospital Emergency Department or in one of its affiliated hospitals, you may also see other doctors (e.g. residents or fellows), since they are teaching hospitals.

After the doctors talk with you and examine you/your child, some tests and treatments may be needed. When the results come back, the doctors will review them with you and make a plan for follow-up care or arrange admission to the hospital.

Step 4: Follow-up The hospital emergency department will be in touch with your primary care physician after your/your child's visit. You may also be asked to communicate or follow up with your primary care physician.

Visiting Boston Children's? **There's a {M}APP for that**

Learn more  childrenshospital.org/myway

FREE DOWNLOAD
Scan with your smartphone

iPhone



Droid



Boston Children's at Lexington

482 Bedford Street, Lexington, MA 02420 | 781-672-2100
 bostonchildrens.org/lexington



Boston Children's Hospital

Community of Care

Until every child is well™

Services at Boston Children's at Lexington

- Adolescent/Young Adult Medicine
- Allergy/Immunology
- Ambulatory Surgery
- Audiology
- Cardiology
- Cerebral Palsy Clinic
- Coordinated Care
- Dermatology
- Dermatology Laser Service
- Echocardiography
- EEG/Ambulatory EEG
- Endocrinology
- Gastroenterology
- General Surgery
- Genetics
- Gynecology
- Hematology
- Lactose Breath Testing
- Neurology
- Nutrition Services
- Occupational Therapy
- Ophthalmology
- Orthopedic Surgery
- Otolaryngology
- Phlebotomy
- Physical Therapy
- Plastic Surgery
- Preventive Cardiology
- Pulmonary/Respiratory Diseases
- Radiology
 - Diagnostic
 - Fluoroscopy
 - Ultrasound
- Rheumatology
- Sleep Disorders
- Speech Pathology
- Sports Medicine
- Urology

Please arrive to your appointment on time

We really appreciate your timely arrival. Traffic in our area can be challenging, especially during rush hour. Please allow ample time to arrive.

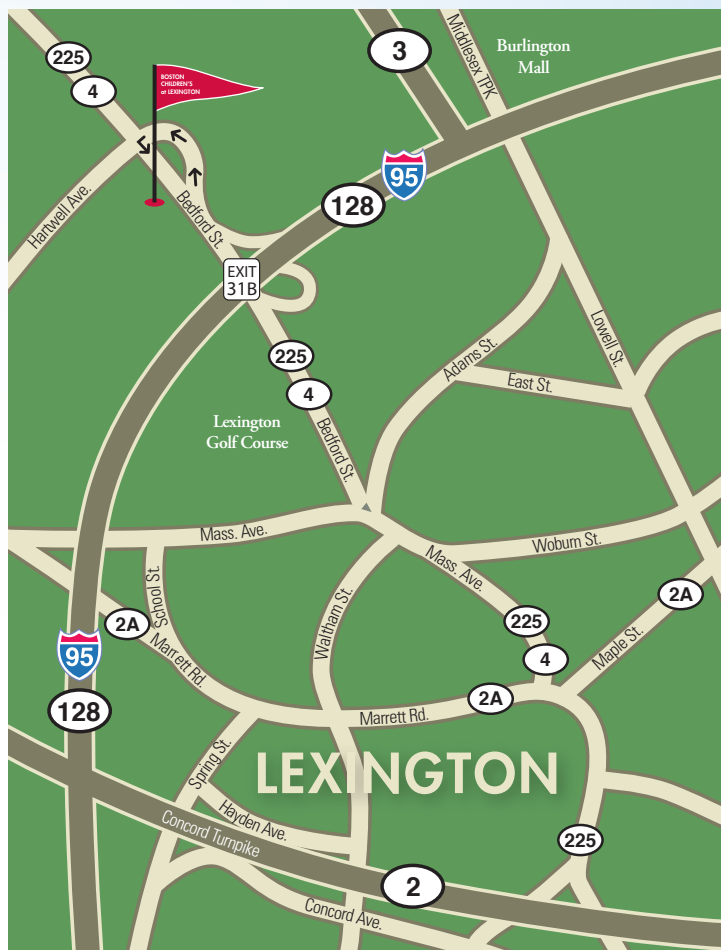
No-show policy

Our goal is to schedule appointments as close as possible to the dates and times requested by our patients. If you are unable to keep an appointment, please notify us at least 24 hours in advance so that another patient may take your place.

Request an appointment online

Visit our web site to request an appointment in many departments and programs. The request will go to a representative who will be in touch with you within two business days. Please leave a window of time when it might be best to call you back. To access the "Request an Appointment" feature, visit childrenshospital.org/appointment.

To order a map pad of these pages see back cover



Driving directions

From the north or south via Route 128

- Take exit 31B.
- Go approximately ¼ mile and bear right into the jug-handle turn (which will allow you to make a U-turn on Bedford Street).
- Stay in the left lane of the jug handle.
- Take a left at the light.
- The entrance to Boston Children's Hospital Lexington is the first driveway on the right after the turn.



Visiting Boston Children's? There's a **{M}APP** for that

Learn more childrenshospital.org/myway

FREE DOWNLOAD
Scan with your smartphone

iPhone



Droid





Medical Provider List

Adolescent Medicine

Karen Capraro-Gentuso, LICSW
Joan Mansfield, MD
Andrea Pettinato, MD
Elizabeth Woods, MD, MPH

Allergy/Immunology

Francisco Bonilla, MD, PhD
Ari Fried, MD
William Sheehan, MD

Audiology

Amal Awdeh, AuD, CCC-A
Shannon Hamill, AuD, CCC-A
Jane Liberman, AuD, CCC-A
Elizabeth Ogren, AuD, CCC-A
Kathleen West, AuD, CCC-A
Karen Wilber, AuD, CCC-A
Karen Willson, AuD, CCC-A

Cardiology

Juli-anne Evangelista, DNP, ARNP, CPNP-A
Michael Freed, MD
David Fulton, MD
Robert Geggel, MD
Amy Roberts, MD

Coordinated Care

Kristin Buxton, PNP
Laurie Glader, MD
Lisa Cannon, MD

Dermatology

Stephen Gellis, MD
Margaret Lee, MD, PhD
Marilyn Liang, MD
Sheilagh Maguiness, MD

Endocrinology

Joan Mansfield, MD

Gastroenterology

Elana Bern, MD, MPH
Athos Bousvaros, MD, MPH
Nancy Goldberg, PNP
Munir Mobassaleh, MD
Mary-Alice Tully, MSN, APRN, BC, PNP
Anne Wolf, MD

General Surgery

Steven Fishman, MD
Jay Wilson, MD

Genetics

Jonathan Picker, MD, PhD
Joan Stoler, MD

Gynecology

Lisa Gruenberg, MD
Lalita Haines, MD
Marc Laufer, MD
Maureen Lynch, MD
Merrill Weitzel, MD

Hematology

Colin Sieff, MB, BCH

Neurology

Irina Anselm, MD
Catherine Chapman, MD
David Coulter, MD
Lauren LaFortune, MD
Mark Libenson, MD
Kerry Matthews, RN
Thomas Megerian, MD, PhD
Alexander Rotenberg, MD, PhD

Nutrition Services

Wendy Elverson, RD, LDN, CSP, CNSD
Annette Schille, MS, RD, LDN

Ophthalmology

Alexandra Elliott, MD
Suzanne Johnston, MD
Kathryn Miller, OD
Robert Petersen, MD
Aparna Raghuram, OD, PhD
Jeffrey Sorkin, MD

Orthopedic Surgery

John Emans, MD
Gregory Melkonian, MD, DVM
Donna Nimec, MD
Susan Quinn, MD
Robert Rosenthal, MD
Brian Snyder, MD, PhD
Seymour Zimble, MD

Otolaryngology

Kathryn Colman, MD
Margaret Kenna, MD, MPH, FACS, FAAP
Gi Soo Lee, MD
Laurie Ohlms, MD
David Roberson, MD, FACS
Mark Volk, MD, DMD, FACS

Physical Therapy

Janet Bryan, RPT
Sandy Denning, PT
Jennifer Vargs, RPT

Plastic Surgery

Brian Labow, MD

Preventive Cardiology

Elizabeth Yellen, MD

Pulmonary/Respiratory Diseases

Gregory Sawicki, MD, MPH
Catherine Sheils, MD

Radiology

The same radiologists as Boston.
Please see online directory.

Rheumatology

Fatma Dedeoglu, MD
Robert Sundel, MD

Sleep Disorders

Ronald Becker, MD

Speech Pathology

Amy Bozek, MS, CCC-SLP
Michael Bright, MS, CCC-SLP
Laurie Chorev, MS, CCC-SLP
Lisa Schonberger, MS, CCC-SLP
Allison Adler Smith, MS, PhD, CF-SLP

Sports Medicine

Ellen Geminiani, MD
Dennis Kramer, MD

Urology

Stuart Bauer, MD
Richard Lee, MD

For our most up-to-date listing of medical
providers please visit:

bostonchildrens.org/specialists

Boston Children's at Peabody

10 Centennial Drive, Peabody, MA 01960 | 978-538-3600
bostonchildrens.org/peabody



Boston Children's Hospital

Community of Care

Until every child is well™

Services at Boston Children's at Peabody

- Adolescent/Young Adult Medicine
 - Allergy/Immunology
 - Audiology
 - Cardiology
 - Dermatology
 - Developmental Medicine
 - Diabetes
 - EEG
 - Endocrinology
 - Gastroenterology
 - General Surgery
- Genetics
 - Gynecology
 - Hematology
 - Lactose Breath Testing
 - Nephrology
 - Neurology
 - Neurosurgery
 - Nutrition Services
 - Ophthalmology
 - Orthopedic Surgery
 - Otolaryngology
 - Phlebotomy
- Plastic Surgery
 - Preventive Cardiology
 - Pulmonary/Respiratory Diseases
 - Radiology
 - Diagnostic
 - Fluoroscopy
 - MRI
 - Ultrasound
 - Rheumatology
 - Sleep Disorders
 - Speech Pathology
 - Sports Medicine
 - Urology



Driving directions

From Boston

- Take Route 93 North to Route 95/128 North.
- Take exit 45 (stay left for Route 128) where 95 and 128 split.
- Take 128 North to Exit 28. Stay in the middle lane on the off ramp, which will veer to the right.
- Turn left at the first light onto Centennial Drive.
- Take your first left into 10 Centennial Drive.
- Follow the signs to Boston Children's Hospital North.



Free Parking

From southeastern New England

- Take 95/128 North to Exit 45 (stay left for Route 128) where 95 and 128 split.
- Take 128 North to Exit 28. Stay in the middle lane on the off ramp, which will veer to the right.
- Turn left at the first light onto Centennial Drive.
- Take your first left into 10 Centennial Drive.
- Follow the signs to Boston Children's Hospital North.

From northern New England

- Take Route 95 South to Route 128 North.
- Take 128 North to Exit 28. Stay in the middle lane on the off ramp, which will veer to the right.
- Turn left at the first light onto Centennial Drive.
- Take your first left into 10 Centennial Drive.
- Follow the signs to Boston Children's Hospital North.

Boston Children's physicians also provide care at Beverly Hospital including:

- Emergency services
- Inpatient services
- Neonatal services

Please arrive to your appointment on time

We really appreciate your timely arrival. Traffic in our area can be challenging, especially during rush hour. Please allow ample time to arrive.

No-show policy

Our goal is to schedule appointments as close as possible to the dates and times requested by our patients. If you are unable to keep an appointment, please notify us at least 24 hours in advance so that another patient may take your place.

Request an appointment online

Visit our web site to request an appointment in many departments and programs. The request will go to a representative who will be in touch with you within two business days. Please leave a window of time when it might be best to call you back. To access the "Request an Appointment" feature, visit childrenshospital.org/appointment.

To order a map pad of these pages see back cover

Visiting Boston Children's? **There's a**

{M}APP for that

Learn more [➔ childrenshospital.org/myway](http://childrenshospital.org/myway)

FREE DOWNLOAD

Scan with your smartphone

iPhone [➔](#)

Droid [➔](#)



Medical Provider List

Adolescent Medicine

Rebecca O'Brien, MD
Jennifer Mehigan, NP

Allergy

Lisa Bartnikas, MD
Ari Fried, MD
Rima Rachid, MD

Audiology

Bobbi Bulriss, AUD
Susan Merenda, MD, CCC-A

Cardiology

Juli-Anne Evangelista, DNP, APRN
Michael Freed, MD
Jonathan Rhodes, MD
Justin Zachariah, MD

Preventive Cardiology (Lipid)

Skylar Griggs, Nutrition
Heather Harker, RN
Justin Zachariah, MD

Dermatology

Stephen Gellis, MD
Jennifer Huang, MD
Sheilagh Maguiness, MD

Developmental Medicine

Carrie Mauras, PHD
Laura Weissman, MD

Endocrinology

Melissa Crocker, MD
Carrie Fritz, MS, RN, CS, DCE
Nina Ma, MD
Kathleen Reardon, RN, BSN, CDE
Abinash Srivatsa, MD

Gastroenterology

Nirav Desai, MD
Laurie Fishman, MD
Barbara Marinaccio, NP
Bram Raphael, MD
Mary Alice Tully, NP
Dascha Weir, MD
Naamah Zitomersky, MD

General Surgery

Catherine Chen, MD, MPH
Shawn Rangel, MD

Genetics

Jessica Douglas, LGC
Catherine Nowak, MD
Sharon Smith, MD

Gynecology

Amanda French, MD

Hematology

Kapil Saxena, MD

Neurophysiology

Lactose Breath Testing

Nephrology

Michael Ferguson, MD
Deborah Stein, MD

Neurology

Norberto Alvarez, MD
Caroline Fitzgerald, NP
Jurriaan Peters, MD
Peter Raffalli, MD
Michael Robbins, MD
Pamela Schardin, MP

Neurosurgery

Mark Proctor, MD
Edward Smith, MD

Nutrition Services

Ester Awnetwant Esperson, RD
Lauren Cullity, RD
Sharon Weston, RD

Ophthalmology

Linda Dagi, MD
Danielle Ledoux, MD
Aparna Raghuram, OD, PHD
Josephine Sandoval, OD, FAAO
Ankoor Shah, MD
Deborah Vanderveen, MD

OWL (Optimal Weight for Life)

Julie Cappella, PsyD
Melissa Crocker, MD
Robert Markowitz, MD
Sarah Picard, MA, Med
Sharon Weston, RD

Orthopedics

Donald Bae, MD
Bryce Gillespie, MD
Michael Glotzbecker, MD
Susan Mahan, MD
Travis Matheney, MD

Otolaryngology

Jacob Brodsky, MD
Kathryn Colman, MD
Margaret Kenna, MD
Roger Nuss, MD

Laurie Ohlms, MD
Karen Watters, MD
Kenneth Whittemore, MD

Plastic Surgery

Arin Greene, MD

Pulmonary

Thomas Martin, MD
Catherine Sheils, MD

Rheumatology

Susan Kim, MD

Sleep Disorders

Jennifer Gringasfield, PNP

Speech Pathology

Michael Bright, MS, CCC, SLP
Katie Davidson, MS, CF-SLP

Sports Medicine

Michael Beasley, MD
Benton Heyworth, MD
Leslie Milne, MD
Bridget Quinn, MD

Urology

Marc Cendron, MD
Christine Danielson, PNP
David Diamond, MD
Richard Yu, MD

For our most up-to-date listing of medical providers please visit:

bostonchildrens.org/specialists



Boston Children's at Waltham

9 Hope Avenue, Waltham, MA 02453 | 781-216-2100
bostonchildrens.org/waltham



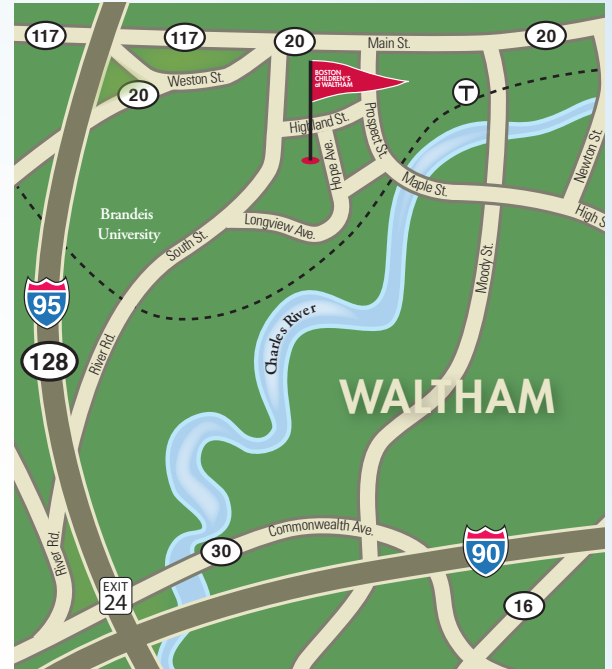
Boston Children's Hospital

Community of Care

Until every child is well™

Services at Boston Children's at Waltham

- Acupuncture
- Adolescent Medicine
- Adolescent Substance Abuse
- Allergy/Immunology
- Ambulatory Surgery
- Audiology (diagnostic and habilitative)
- Augmentative Communication
- Boston Adult Congenital Heart (BACH)
- Cardiology
- Center for Communication Enhancement
- Contact Lens Service
- Deaf and Hard of Hearing
- Dermatology
- Developmental Medicine
- Diabetes
- Endocrinology
- Gastroenterology
- General Surgery
- Genetics
- Headache Clinic
- Hematology
- Infusion
- Lactose Breath Testing
- Nephrology
- Neurology
- Neurosurgery
- Nutrition Services
- Occupational Therapy
- Ophthalmology
- Optimal Weight for Life Program
- Oral and Maxillofacial Surgery
- Orthopedic Surgery
- Otolaryngology
- Pain Rehabilitation Center
- Pediatric Eyewear (Medford Optical)
- Phlebotomy
- Physical Therapy
- Plastic Surgery
- Preventive Cardiology
- Pulmonary/Respiratory Diseases
- Radiology
 - CT
 - Diagnostic
 - Fluoroscopy
 - MRI
 - Nuclear Medicine
 - Ultrasound
- Rheumatology
- Sleep Disorders
- Sleep Lab
- Speech Pathology
- Sports Medicine
- Stress Testing
- Urodynamics
- Urology



Driving directions

From the south (Route 128)

- Take Exit 24 for Route 30.
- Route 30 is one of several options at this exit, so follow signs carefully.
- Turn left at the top of the ramp onto Route 30 West.
- Turn right at the traffic light onto River Road which becomes South Street.
- Go past Brandeis University, which is two miles ahead.
- Continue about ¼ mile and take a right on Longview Avenue.
- Follow signs, bearing left around parking garage, to entrance for Boston Children's Hospital Waltham.



From the north (Route 128)

- Take Exit 24 for Route 30.
- At end of ramp, proceed through traffic light (across Route 30).
- This is River Road which becomes South Street.
- Go past Brandeis University, which is two miles ahead.
- Continue about ¼ mile and take a right on Longview Avenue.
- Follow signs, bearing left around parking garage, to entrance for Boston Children's Hospital Waltham.

Please arrive to your appointment on time

We really appreciate your timely arrival. Traffic in our area can be challenging, especially during rush hour. Please allow ample time to arrive.

No-show policy

Our goal is to schedule appointments as close as possible to the dates and times desired by our patients. If you are unable to keep an appointment, please notify us at least 24 hours in advance so that another patient may take your place.

Request an appointment online

Visit our web site to request an appointment in many departments and programs. The request will go to a representative who will be in touch with you within two business days. Please leave a window of time when it might be best to call you back. To access the "Request an Appointment" feature, visit childrenshospital.org/appointment.

To order a map pad of these pages see back cover

Visiting Boston Children's? **There's a {M}APP for that** Learn more childrenshospital.org/myway

FREE DOWNLOAD
Scan with your smartphone

iPhone

Droid



Medical Provider List

Acupuncture

781-216-3700

Adolescent Medicine

781-216-1800

Adolescent Substance Abuse

781-216-1800

Allergy/Immunology

781-216-1800

Ambulatory Surgery

781-216-1200

Audiology (diagnostic and habilitative)

617-355-6461

Augmentative Communication

781-216-2209

Boston Adult Congenital Heart (BACH)

617-355-2079

Cardiology

617-355-2079

Center for Communication Enhancement

781-216-2200

Contact Lens Service

781-216-1444

Deaf and Hard of Hearing

781-216-2215

Dermatology

781-216-1800

Developmental Medicine

781-216-1800

Diabetes

781-216-1800

Endocrinology

781-216-1800

Gastroenterology

781-216-1800

General Surgery

617-355-7800

Genetics

781-216-1800

Headache Clinic

781-216-1960

Hematology

781-216-1800

Infusion

781-216-1500

Lactose Breath Testing

781-216-1800

Nephrology

781-216-1800

Neurology

781-216-2596

Neurosurgery

617-355-6008

Nutrition Services

781-216-1800

Occupational Therapy

781-216-3670

Ophthalmology

781-216-1400

Optimal Weight for Life Program

781-216-1800

Oral and Maxillofacial Surgery

781-216-1644

Orthopedic Surgery

617-355-6021

Otolaryngology

617-355-3462

Pain Rehabilitation Center

781-216-1650

Pediatric Eyewear (Medford Optical)

781-216-1444

Phlebotomy

781-216-1980

Physical Therapy

781-216-3670

Plastic Surgery

781-216-1600

Preventive Cardiology

617-355-2079

Pulmonary/Respiratory Diseases

781-216-1800

Radiology

781-216-1100

- CT
- Diagnostic
- Fluoroscopy
- MRI
- Nuclear Medicine
- Ultrasound

Rheumatology

781-216-1800

Sleep Disorders

781-216-2596

Sleep Lab

781-216-2570

Speech Pathology

781-216-2237

Sports Medicine

617-355-3501

Stress Testing

617-355-2079

Urodynamics

617-355-7796

Urology

617-355-7796

For our most up-to-date listing of medical providers please visit:

bostonchildrens.org/specialists

Boston Children's Physicians Weymouth

Stetson Medical Center | 541 Main Street, Weymouth, MA 02190 | 781-216-3800
bostonchildrens.org/weymouth



**Boston
Children's
Hospital**

**Community
of Care**

Until every child is well™

Services at Boston Children's Physicians Weymouth

- Adolescent Medicine
- Allergy
- Audiology
- Boston Adult Congenital Heart (BACH)
- Cardiology
 - Fetal Echo
 - Nurse Practitioner General Cardiology Clinic
- Dermatology
- Developmental Medicine
- Diabetes
- EEG
- Endocrinology
- Gastroenterology
- General Surgery
- Genetics
- Hematology
- Nephrology
- Neurology
- Nutrition Services
- Ophthalmology
- Orthopedic Surgery
- Otolaryngology
- Phlebotomy
- Plastic Surgery
- Preventive Cardiology
- Pulmonary/Respiratory Diseases
- Radiology
 - Diagnostic
 - Fluoroscopy
 - Ultrasound
- Rheumatology
- Sleep Disorders
- Speech Pathology
- Urology

Scheduling:

Department of Medicine | 781-216-3731
Neurology | 781-216-3763
Specialty clinics | 781-216-3807

Please arrive to your appointment on time

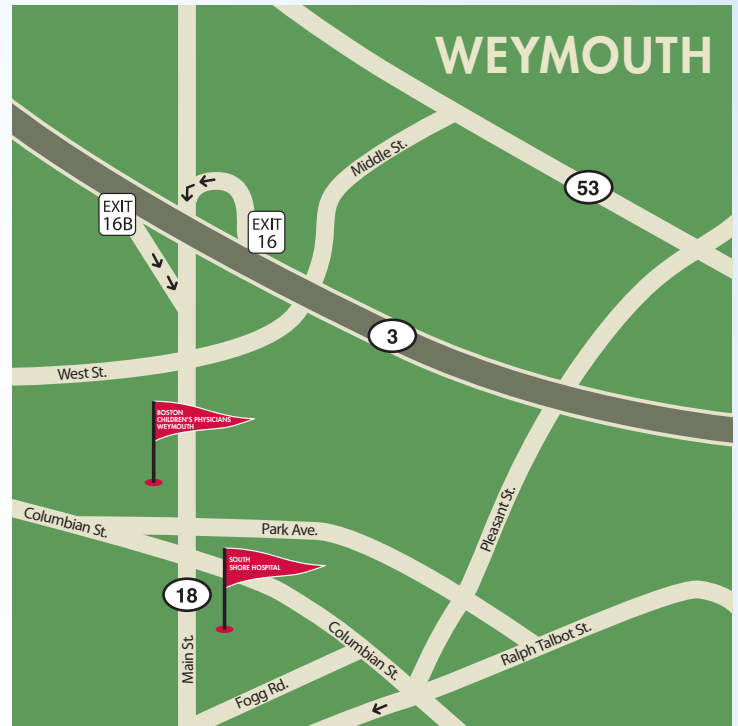
We really appreciate your timely arrival. Traffic in our area can be challenging, especially during rush hour. Please allow ample time to arrive.

No-show policy

Our goal is to schedule appointments as close as possible to the dates and times requested by our patients. If you are unable to keep an appointment, please notify us at least 24 hours in advance so that another patient may take your place.

Boston Children's physicians also provide care at South Shore Hospital including:

- Emergency services
- Inpatient services
- Neonatal services



Driving directions

From the south (Cape Cod and Plymouth) via Route 3 north

- Take Exit 16–Weymouth/South Weymouth.
- Take a left turn at the end of the ramp onto Route 18.
- At the first traffic signal, take a right onto West Street.
- Then take your first left into the parking lot entrance of the Stetson Building.

From the north (Boston, Rte 128) via Route 3 south

- Take exit 16B–Weymouth/Abington.
- Take a right turn at the end of the ramp onto Route 18.
- Proceed to the first traffic light.
- Take a right onto West Street.
- Take your first immediate left into the parking lot entrance of the Stetson Building.



Free Parking

Request an appointment online

Visit our web site to request an appointment in many departments and programs. The request will go to a representative who will be in touch with you within two business days. Please leave a window of time when it might be best to call you back. To access the "Request an Appointment" feature, visit childrenshospital.org/appointment.

To order a map pad of these pages see back cover

Visiting Boston Children's? **There's a {M}APP for that** Learn more childrenshospital.org/myway

FREE DOWNLOAD Scan with your smartphone

iPhone

Droid



Medical Provider List

Adolescent Medicine, Gynecology, and Eating Disorders

Tamara Baer, MD
Amy Desroches Divasta, MD, MMSc
Scott Leibowitz, MD
Sara Pitts, MD
Lydia Shrier, MD, MPH

Allergy

Karol Timmons, RN, MS, CPNP
Andrew MacGinnitie, MD, PhD
Douglas McDonald, MD

Audiology

Briana Kelly Dornan, AuD, CCC-A

Boston Adult Congenital Heart

Fred Ming-Chieh Wu, MD
Caitlin Joyce, PHP, PA-C

Cardiology

David Fulton, MD
Jonathan Rhodes, MD
Mary Theresa Parsons, NP, MSN, PNP
Mary Anne Milbert, NP
Susan Saleeb, MD (Fetal Echo Clinic)

Dermatology

Ines Wu, MD

Developmental Medicine

Demetra Pappas, MD
Dave Stein, PsyD

Endocrinology

Susan Crowell, BSN, RN, CDE
Gregory Goodwin, MD
Christina Luedke, MD, PhD
Melissa Putnam, MD

Feeding Evaluations

Kara Fletcher Larson, MS, CCC-SLP
Taryn Sullivan, MS, CF-SLP

Gastroenterology

Maireade McSweeney, MD
Kimberli O'Malley, RN, MSN, CPNP
Randi Pleskow, MD
Eitan Rubinstein, MD
Paul Rufo, MD, MMSc

General Surgery

Terry Buchmiller, MD
Neil Feins, MD
Thomas Jaksic, MD, PhD
Konstantinos Papadakis, MD

Genetics

Mira Irons, MD
Jonathan Picker, MD, PhD
Ann Reinhard Seman, Genetic Counselor
Joan Stoler, MD
Audrey Woerner, MD

Hematology

Matthew Heeneey, MD
Kapil Saxena, MD, MS

Nephrology

Michelle Baum, MD

Neurology

Jeffrey Bolton, MD
Eugene Roe, MD
Cynthia Rooney, MD
Vicki Netsky-Doyle, RN
Karen Hugill, RN, MSN, NP-C
EEG

Nutrition

Elise Steiner, RD, LDN

Ophthalmology

Anna Maria Baglieri, OD
Gena Heidary, MD, PhD
Iason Mantagos, MD
Josephine Sandoval, OD
Caroline Wu, MD

Orthopedics

Benjamin Shore, BSc, MD, FRCSC
Samantha Spencer, MD
Bryce Gillespie, MD

Otolaryngology

Gi Soo Lee, MD
Greg Licameli, MD, FACS
Kenneth Whittemore, MD
Jacob Brodsky, MD

Plastic Surgery

David Kim, MD

Preventive Cardiology

Justin Zachariah, MD

Pulmonology

Henry Dorkin, MD
Umakanth Khatwa, MD
Monica Ulles, PNP
Gary Visner, MD

Rheumatology

Mindy Lo, MD

Urology

Bartley Cilento, Jr., MD., MPH
Caleb Nelson, MD, MPH

Other services:

ECHO
EKG
Radiology
 Diagnostic
 Ultrasound
 Fluoroscopy
Phlebotomy Lab

For our most up-to-date listing of medical providers please visit:

bostonchildrens.org/specialists





Directions to main campus

From I-93 North or South

- Follow the signs to Storrow Drive.
- After the Copley Square/Massachusetts Avenue sign, take the left exit off Storrow Drive marked Fenway, Route 1.
- Take the right fork marked Boylston Street, Outbound.
- At the first major intersection, bear left onto Brookline Avenue, past Beth Israel Deaconess Medical Center—East Campus to the Longwood Avenue intersection.
- At the next major intersection, turn left onto Longwood Avenue.
- Boston Children's main entrance is two blocks down on the right.
- Boston Children's parking garage is across the street on the left.

From South of Boston via Routes 1, 28 and 138

- From Route 1, continue to the Jamaica way.
- From Routes 28 or 138, proceed via Morton Street and the Arborway to the Jamaica way.
- Continue on the Jamaica way as it turns into the Riverway.
- At the Brookline Avenue traffic light, turn right onto Brookline Avenue.
- Continue to the third traffic light and turn right onto Longwood Avenue.
- Boston Children's main entrance is two blocks down on the right.
- Boston Children's parking garage is across the street on the left.

From West of Boston via the Massachusetts Turnpike (I-90)

- Take Exit 22 at Copley Square/Prudential.
- Follow the left lane, labeled Prudential Center, and take Huntington Avenue west to Longwood Avenue.
- Turn right onto Longwood Avenue and go past Harvard Medical School.
- Boston Children's main entrance is on the left.
- Boston Children's parking garage is across the street on the right.

From West of Boston via Route 9

- On Route 9, proceed to Brookline Village.
- After passing the fire station on your right, at the next large intersection (at the Brook House Apartments) take a left onto Brookline Avenue.
- Proceed through four traffic lights to the Longwood Avenue intersection.
- Turn right onto Longwood Avenue.
- Boston Children's main entrance is two blocks down on the right.
- Boston Children's parking garage is across the street on the left.



Boston Children's parking garage

Open 24 hours a day, the Boston Children's parking garage is located across the street from the hospital's Main Entrance. It is at the corner of Blackfan Circle and Longwood Avenue.

You will need to take your ticket with you when you leave your car. Before returning to your car, first go to the garage lobby to one of the automated pay stations or to the cashier window. The cashiers will process the ticket and hand it back to you. When you are leaving the garage, place the processed ticket in the exit gate of the garage to leave.

A discounted rate is available for patients and families who park at this garage and not at 333 Longwood Avenue. Parking tickets can be validated at Boston Children's Main Reception, the Emergency Department (for emergency patients only), Adolescent Medicine and the Parking Office (Boston Children's Hospital Garage, 1st Floor). Hours of validation may vary by location.

Valet parking is available 24 hours a day, for an additional fee. Handicapped parking is available at the Main Entrance for no additional fee for vehicles with handicap plates. You can drop your car at the hospital's Main Entrance to be parked. When leaving, just present your valet ticket at the valet station in the Main Lobby. Your car will be brought to the Main Entrance driveway.

Please arrive to your appointment on time

We really appreciate your timely arrival. Traffic in our area can be challenging, especially during rush hour. Please allow ample time to arrive.

No-show policy

Our goal is to schedule appointments as close as possible to the dates and times requested by our patients. If you are unable to keep an appointment, please notify us at least 24 hours in advance so that another patient may take your place.

Request an appointment online

You may visit our web site to request an appointment in many departments and programs. The request will go to a representative who will be in touch with you within two business days. Please leave a window of time when it might be best to call you back. To access the "Request an Appointment" feature, visit childrenshospital.org/appointment.

To order a map pad of this page see back cover

Visiting Boston Children's? **{M}APP** for that
There's a

Learn more  childrenshospital.org/myway

FREE DOWNLOAD Scan with your smartphone

iPhone   Droid  

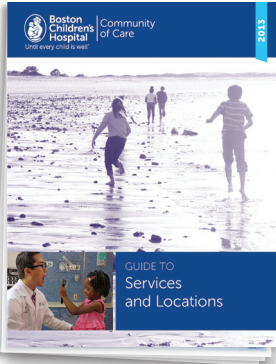


Boston Children's Hospital
Until every child is well™

Community of Care

Free materials for healthcare providers

Services & Location Guide
Item #152142



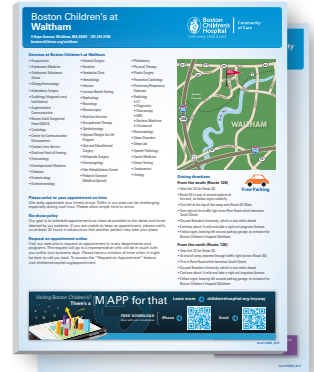
Boston Children's at Lexington
50-sheet map pad, 2 sides
Item #153012



Boston Children's at Peabody
50-sheet map pad, 2 sides
Item #153010



Boston Children's at Waltham
50-sheet map pad, 2 sides
Item #153013



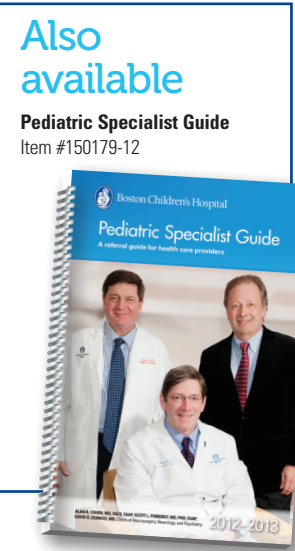
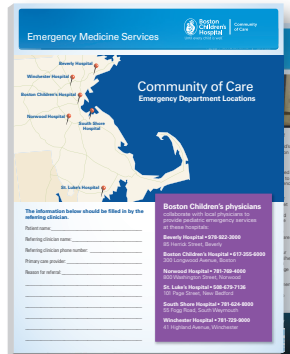
Boston Children's Physicians Weymouth
50-sheet map pad, 2 sides
Item #153011



Boston Children's Hospital
50-sheet map pad
Item #153009



Emergency Medicine Services
50-sheet map pad, 2 sides
Item #152143



You can order these materials by visiting bostonchildrens.org/foryourpractice

